

Hill Hi-Lo and HA90AM Table

Owner's Manual




Hill Laboratories
COMPANY

Quality and Innovation Since 1945.

Congratulations!

And welcome to the Hill Laboratories family.

Hill Laboratories Company has been making quality a family business since 1945. Your Hill Hi-Lo or HA90AM Table is built in a tradition of innovation and value that Hill Laboratories products have become known for. Our good name rests on the confidence that your Hill Table will provide you with solid, reliable service for many years to come.

At Your Service

The Hill Laboratories Guarantee.

Your Hill Laboratories table has been thoroughly tested and inspected before shipment. All parts are guaranteed against defect in materials for one full year from the date of purchase. Tables damaged by mishandling or accident will be repaired at a reasonable charge. All correspondence should be directed to your local dealer, or when this is not possible, to Hill Laboratories directly.

We appreciate your business and your confidence in our products. Our aim is to provide you with excellent service and satisfaction for many years to come.

A handwritten signature in black ink, reading "Howard A. Hill". The signature is written in a cursive style with a large, stylized initial 'H'.

Howard A. Hill
President, Hill Laboratories

Hill Hi-Lo/HA90AM Manual

Table of Contents

Product Features

Basic Table Components _____	1.1
Specifications _____	1.2

Table Care

Cleaning your Table _____	2.1
Caution and Symbol Explanation _____	2.2

Basic Table Operation - Hill HA90AM

Height Pedal _____	3.1
--------------------	-----

Basic Table Operation - Hill Hi-Lo

Tilt Pedal _____	3.2
------------------	-----

Table Features

Face Cut-Out _____	4.1
Angled Foot Section _____	4.2
Standing Foot Board (Hi-Lo) _____	4.3
Patient Gripper Bar (Hi-Lo) _____	4.4
Paper Tray (Hi-Lo) _____	4.5

Maintenance and Support	Pages 6
--------------------------------------	---------

Wiring Diagrams	Pages 7, 8
------------------------------	------------

Index of Terms	Pages 9
-----------------------------	---------

Product Features



1.1 Basic Table Components and Options

1. Full-length face cut-out
2. Angled Foot Section
3. Auto-Drop Foot Board
4. Protective Acrylic Base Cover
5. Electric Foot Pedal for Tilt (Hi-Lo) or Height (HA90AM)
6. High-Capacity Paper Tray
7. Patient Gripper Bar

1.2 Specifications

- Electric requirement 60 Hz, 115 v~, 5.0 A (or 230 v~, 50 Hz)
- Lifting capacity - Hi-Lo: 350 pounds; HA90AM: 450 pounds
- Acrylic thermo-plastic base skirting
- Ultra-Cell® foam for comfort and shape retention
- Tilt (Hi-Lo) - 0°-80° (in full-tilt position)
- Height Range - HA90AM: 22" - 35"
Hi-Lo - Fixed Flat Height - 28", 30" or 34"
- Length - Hi-Lo: 6'; HA90AM: 6' 3"
- Width - Both tables: 27", optional 30"
- Shipping weight approximately 250-300 lbs.

Table Care

2.1 Cleaning your Table

Hill table upholstery may be cleaned with Hill Laboratories' Vinyl and Leather Cleaner or any household dishwashing liquid mixed with water. Hill also offers Protex™ Disinfectant Spray and wipes to protect against pathogens, such as MRSA, HIV, Staph and the H1N1 Swine Flu Virus. Many stubborn stains can be removed by applying 91% rubbing alcohol (isopropyl alcohol) to the stain and wiping with a dry, soft, lint-free cotton cloth, towel or soft bristle brush.

Caution: These solvents are highly flammable; do not use near open flame or intense heat. Wear rubber gloves during all cleaning activities. When cleaning other parts of your table (besides upholstery) use only nonabrasive household detergents and water.

2.2 Caution and Symbol Explanation

Caution: Children should never be left alone in a room with the table but should always be accompanied by an adult.

Caution: Always unplug the table before performing any maintenance.

Caution: Check table once a year to make sure all internal and external bolts are secure.

Caution: The power cord should be located to avoid risk of tripping or having objects rolled over or placed on top of it. Damaged cords should be replaced with another of hospital grade.

Caution: Grounding reliability can only be achieved when connected to an equivalent receptacle marked hospital only or hospital grade.

Symbols - Each of the symbols below are used in your table labeling. An explanation of each is below.



Attention Symbol
consult accompanying
documents



Dangerous Voltage
Symbol



Type BF Applied
Part Symbol



Ground
Symbol



Alternating
Current
Symbol



Don't Touch
Symbol

Basic Table Operation - Hill HA90AM

3.1 Height Pedal

The HA90AM is equipped with a corded foot pedal which controls the table height from 22" - 35". Press the right side of the pedal to elevate; the left side to lower.

Auto-Touch Foot Pedal (option)

The Auto-Touch Foot Pedal option maintains upward or downward motion after releasing the pedal.

To operate:

- When the table is at the lowest height, double-touch the "UP" arrow and release. The table will continue upward until you tap either side of the pedal again.
- When the table is at maximum height, double-touch the "DOWN" arrow and release. The table will continue downward until you tap either side of the pedal again.
- When the table is at any starting height in between, a single-touch up or down will start and stop the motion.



Basic Table Operation - Hill Hi-Lo

The Hill Hi-Lo features electric foot-pedal controlled movement and smooth transition between soft start-up and landing, the Hill Hi-Lo will not disturb the patient with sudden stopping or bumping. The standing foot board automatically folds down as the table top is lowered.

3.2 Tilt Pedal

The Hill Hi-Lo is equipped with a corded foot pedal which controls the table's angle of tilt from horizontal to a 80° standing position.

Press the right side of the pedal to elevate; the left side to lower.

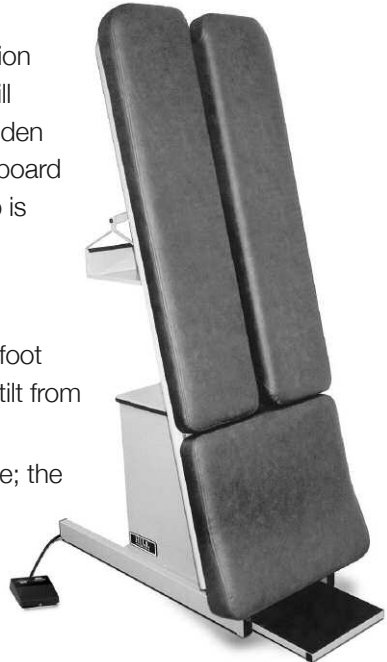


Table Features

4.1 Face Cut-Out

Both the HA90AM and the Hill Hi-Lo have a 36" extended face cut-out to accommodate any size patient.



4.2 Angled Foot Section

Both the HA90AM and the Hill Hi-Lo feature an angled foot section which aids patient comfort. The wedge-shape conforms to the angle of the leg (Some models may be equipped with the optional flat cushion).



4.3 Standing Foot Board (Hi-Lo)

The standing foot board automatically folds down as the table top is tilted to support the patient's weight in the standing position.



4.4 Patient Gripper Bar (Hi-Lo)

A Patient Gripper Bar surrounds the perimeter of the table top. Patients should firmly grasp the gripper bar when the table is in motion.



4.5 Paper Tray (Hi-Lo)

For storage and easy access to patient files or other items. The paper tray pivots to stay parallel with the floor when the table is in motion.



Maintenance

Regular Maintenance

Your Hill HA90AM or Hill Hi-Lo are practically maintenance free. There is no lubrication of parts needed.



Additional service needed? Contact your local dealer or reach us directly:

Phone: 1-877-445-5020

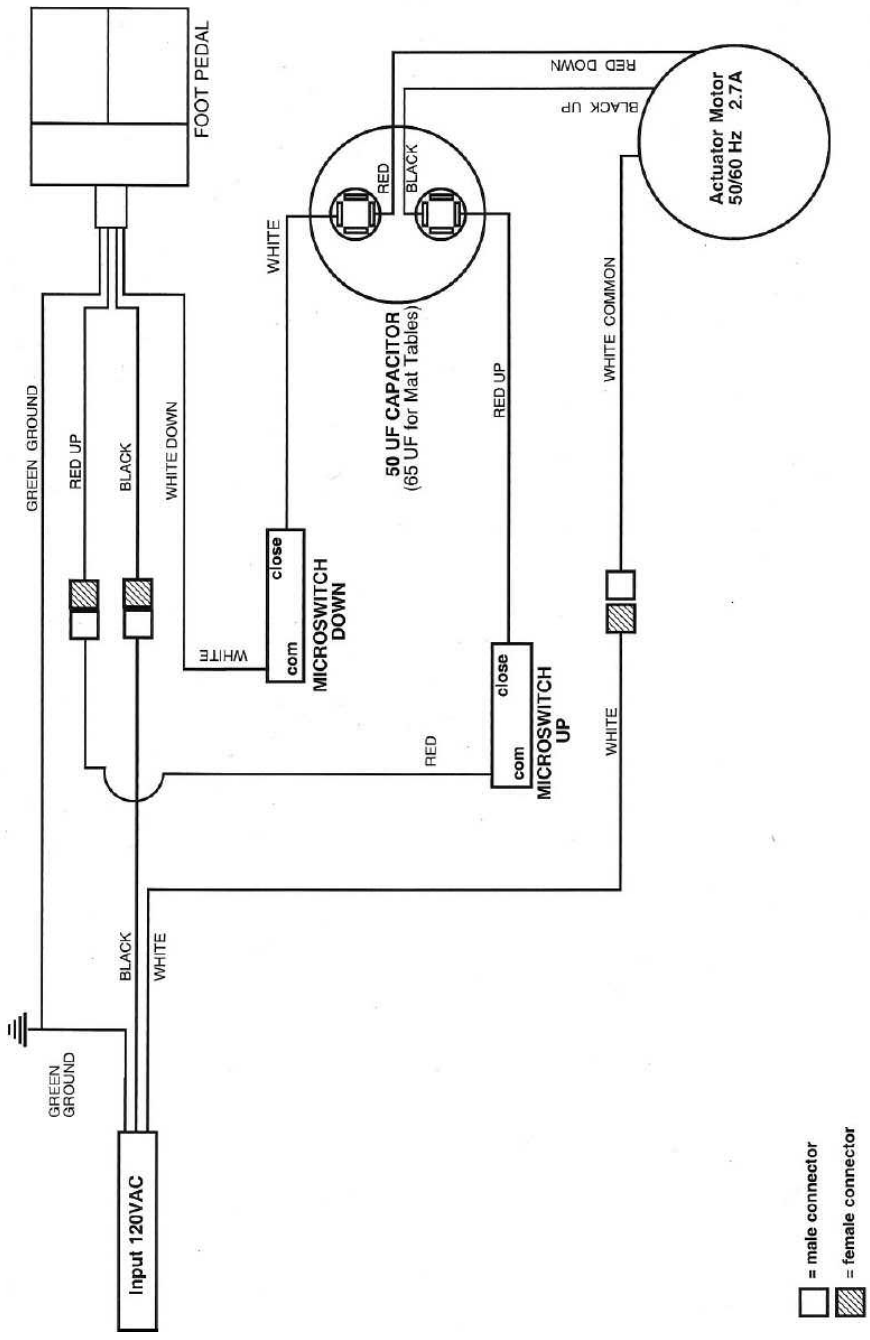
Fax: 610-647-6297

Email: Support@HillLabs.com

Technicians are available 9 am - 4 pm E.S.T., Monday - Friday.

Wiring Diagram - Hi-Lo

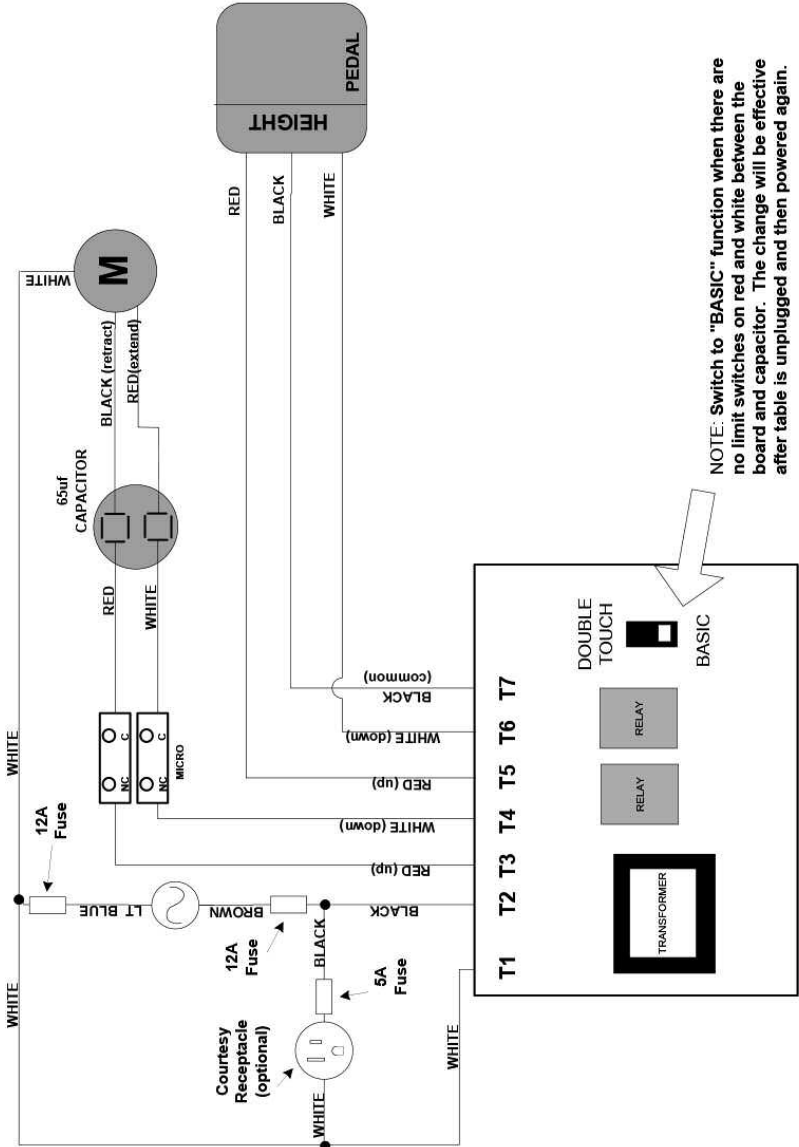
Height System for all Hi-Lo Models.



Wiring Diagram - HA90AM

Height System for all HA90AM Models.

The same circuit is used for Standard Pedals ("basic") and Auto-Touch ("maintain"). The micro switches are necessary for Auto-Touch. They are optional for Basic.



NOTE: Switch to "BASIC" function when there are no limit switches on red and white between the board and capacitor. The change will be effective after table is unplugged and then powered again.

Index

A

- Angled Foot Section 2, 5
- Auto-Drop Foot Board 2, 5
- Auto-Touch Foot Pedal 2, 4

B

- Basic Table Components 2

C

- Cleaning your Table 3
- Cautions and Symbols 3

D

- Diagrams (See Wiring Diagrams)

E

- Electrical specifications 2
- Electrical Schematics 7, 8

F

- Face Cut-out 2, 5
- Foot Board 2, 5
- Foot Pedal
 - Corded 2, 4
 - Auto-Touch 4

G

- Gripper Bar 2, 6

H

- Height Pedal 2, 4
- Height Range 2

L

- Lifting Capacity 2

M

- Maintenance 6

P

- Paper Tray 2, 6

S

- Service and Support 6 and intro, "At Your Service"
- Specifications 2

T

- Table Components 2
- Tilt Pedal 2, 4

W

- Warranty See intro, "At Your Service"
- Wiring Diagrams 7, 8



Hill Laboratories
COMPANY

3 N. Bacton Hill Road, Frazer, PA 19355 • www.HillLabs.com
610-644-2867 • 1-877-445-5020 • Fax 610-647-6297