



HA90, HA90E
AND THE 90MD

Hill Adjustables

FROM HILL LABORATORIES

Treatment Tables for Physicians and Physical Therapists

HILL ADJUSTABLE HA90 *The Classic Variable-Height Table Design*



*Shown with Azure
and Beige Base*

During manipulation, therapy, or mobilization, the HA90 makes your job easier by elevating to the perfect work height. You will appreciate the reduction in bending and back

stress and your patients will appreciate easy access onto the table provided by the variable height. Gliding quietly and smoothly, the HA90 elevates from 20" to 30" with a touch of the foot pedal. All mechanisms are completely enclosed to ensure safety for you and your patients.

- Standard 24" wide top
- Standard 1 1/2" foam
- Optional widths of 27" and 30"
- Optional fold-under stirrups
- Optional extra foot pedal,
- Optional face cut-out, with or without insert
- Optional Side Rails

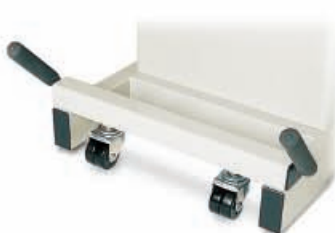


Pictured with the optional face cut-out, the HA90 may also be ordered with a gas spring-assisted lift-back that raises with ease to any position up to 80°. An electric lift-back with foot pedal is also available.

HA90 Options



Rocker foot pedals can be substituted for the corded pedal and are mounted on both sides of the table.



Casters add mobility to your Hill table and are engaged with the foot levers from either side of the table.



A storage shelf can be added to the head or foot end of the table for convenient access to often used items.



A crescent headpiece is available for massage therapy and includes soft foam and adjustable lock positioning.

HILL ADJUSTABLE HA90E

The HA90E is designed for the varied requirements of the physician whose procedures range from manipulation to OB/GYN. Model HA90E smoothly converts from a flat-top to a seated examination table with the touch of the lever activating a gas-assisted spring. For greater ease, the HA90E can be equipped with an electric lift-back.

The 22" to 35" height range of the HA90E is controlled by an electric foot pedal and provides the ideal working level for exams and medical procedures as well as eliminating the need for a stepping stool when patients get on and off the table.

Standard features include stirrups (if desired), a fold-down foot-section, 26" width, and 2 1/2" medium density foam for comfort and shape retention (1 1/2" foam available). Options include a paper roll, extra foot pedal, special widths and any additional features you desire.



Fully Reclinable

The HA90E is equipped with an adjustable back and allows a full recline of the patient with the touch of a lever.

Stirrups

Stirrups for the HA90E adjust in width and length. Leg pressure on the stirrups activates a friction lock. When not in use, stirrups fold down and slide neatly under the table top (see above).

Foot Section

The HA90 can be equipped with an articulating foot section which locks at any angle. A face cut-out and insert can be added.

*Shown with
Bordeaux and
Gray Base*



HILL ADJUSTABLE HA90MD



*Shown with Gravel
and Beige Base*



*Shown with Cinder
and Black Base*

*Standard Model
HA90MD*

*Shown with optional
contour upholstery, ad-
justable headrest and fold-
down armrests*

HA90MD

The HA90MD has a host of features designed for the medical profession in addition to 22" to 35" variable height.

Powered by an electric foot pedal, the lift-back section smoothly converts from a full-recline to chair-examination posture. Like the HA90E, the 90MD is equipped with fully adjustable, retractable foot stirrups, 2 1/2" of foam and 24", 26" or optional 30" widths.

Model 90MD has a pull-out, stainless steel tray that slides neatly under the seat when not in use and may be removed for easy cleaning. An optional adjustable-angle seat cushion can be also added providing pelvic tilt. The foot section manually adjusts to any angle for efficient and comfortable positioning. Shorter legs on the base permit easy movement around the table.

Like all Hill Adjustables, mechanical parts are safely enclosed in a gray, beige or black thermo-plastic base.

90MD OPTIONS



Shown with Indigo and Gray Base

Trendelenburg

The 90MD is available with an electric tilt feature for use with Trendelenburg treatments (pull-out tray not available with this option).

Electric Foot

Stops at any angle and controlled by a foot pedal (pull-out tray not available with this option).



Armboard

The examination armboard has receiving brackets on both sides of the table.



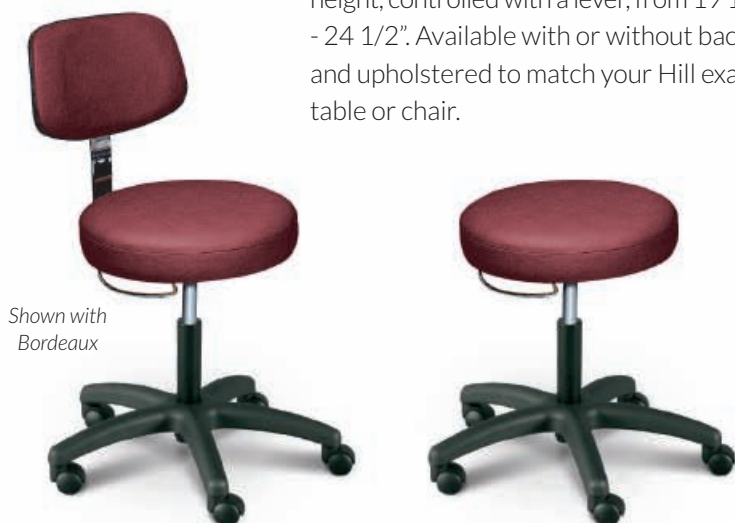
Angled Seat

Position your patient with the tilting seat that adjusts manually to two angles.



Exam Stools

Contemporary design with gas-powered height, controlled with a lever, from 19 1/2" - 24 1/2". Available with or without back and upholstered to match your Hill exam table or chair.



Shown with Bordeaux

Halogen Lamp

With a 34" arm and removable stem which attaches to the table top (includes single electric receptacle).



SPECIFICATIONS

- Powered by an electric actuator. 60 cycle, 110 volts, 5 amps. Lift-back models, 10 amps.
- 220-50 cycle actuator available for additional charge.
- Lifting capacity - 400 lbs.; available 600 upon request
- Choice of colors for upholstered top. Special colors available at additional cost.
- Beige, gray or black telescoping base constructed of fire-rated thermo-plastic.
- Shipping weight approximately 200 lbs.
- Table top length on HA90, 6'3"; on HA90E, 6'1"; HA90MD, 5'10".
- Standard width for HA90, 24"; optional widths, 22", 27", or 30". Standard HA90E, 26"; 90MD, 24" or 26". Optional widths available.
- Range of height on HA90, from 20" to 33"; HA90E and 90MD, 22" to 35". Special heights upon request.
- Medium density foam top on HA90, 1 1/2"; on HA90E and 90MD, 2 1/2". Firm and soft density available upon request.
- One year warranty on all parts and labor.

VERY AFFORDABLE

Finance your Hill Laboratories table or chair through our convenient and affordable lease/purchase plan. Visit HillLabs.com to calculate leasing options or call to speak personally with one of our representatives who will be happy to discuss payment options.

AVAILABLE COLORS



Upholster your table in durable Boltflex® with Prefixx™, scientifically formulated to give superior protection from staining and abrasions. Finesse® and custom colors are available at additional cost. Shades may vary from actual material. Color choices may change without notice.

